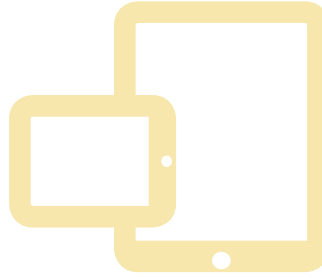


# CIRMA E-Learning Center

## Methamphetamine and Your Community Online Training Program



Our E-Learning Programs are **FREE** to all CIRMA members.

### Course Description:

Methamphetamine presents a growing risk to many communities across the United States. Not only is methamphetamine highly addictive and dangerous for users, but the clandestine labs where the drug is manufactured can pose serious risks to the personal safety of innocent bystanders. Moreover, drug labs can create dangerous and costly environmental hazards. This course will provide you with the insights you need to properly address methamphetamine-related crimes in your community.

**Time:** Approximately 30 minutes [Preview the Methamphetamine and Your Community online training program here.](#)

### Learning Objectives:

- Recognize the physical symptoms of methamphetamine addiction
- Identify the environmental hazards created by methamphetamine production
- Recognize the need for community wide cooperation in dealing with a methamphetamine problem in your jurisdiction

### Key Topics Include:

- No Community Is Immune
- Methamphetamine Usage
- What is Methamphetamine?
- How Methamphetamine Works
- The Effects of Methamphetamine
- Psychological Effects on Chronic Users
- Methamphetamine Production
- Damage Done by Clandestine Methamphetamine Labs
- Physical Injuries
- Environmental Hazards
- Child Endangerment
- How Law Enforcement Addresses the Problem

*To access CIRMA's E-Learning Center or to see a complete schedule of CIRMA's instructor-led Training & Education programs, please visit —*

[www.CIRMATraining.org](http://www.CIRMATraining.org)

To register for this course, please contact your organization's E-Learning Administrator.

