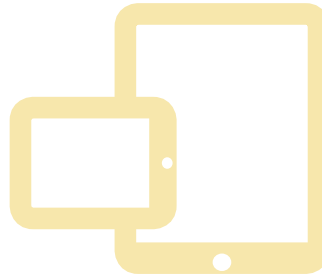


CIRMA E-Learning Center

Ice Control for Managers and Decision Makers Online Training Program



Our E-Learning Programs are **FREE** to all CIRMA members.

Course Description

Snow and ice control on the U.S. highway system consumes over \$2 Billion in direct costs each year. This course provides guidelines for selecting roadway snow and ice control strategies and tactics for a wide range of winter maintenance operating conditions. This two-hour course presents an overview of guidelines that will assist winter maintenance personnel in selecting the appropriate level-of-service (LOS)-driven roadway snow and ice control operations and will help effectively manage snow and ice control resources.

Time: Two hours [Preview the Ice Control for Managers and Decision Makers online training program here.](#)

Learning Objectives:

At the end of training, you will understand the importance of how to handle snow and ice in regards to:

- Level of service.
- Snow and ice operational considerations.
- Performance-based level of service.
- Strategies and tactics and their application to support level of service choices.
- Factors influencing the choice of materials, their form, and associated application rates.
- Recommended snow and ice control practices.
- Recommended operational guidelines for winter maintenance field personnel.

To access CIRMA's E-Learning Center or to see a complete schedule of CIRMA's instructor-led Training & Education programs, please visit —

www.CIRMATraining.org

To register for this course, please contact your organization's E-Learning Administrator.

