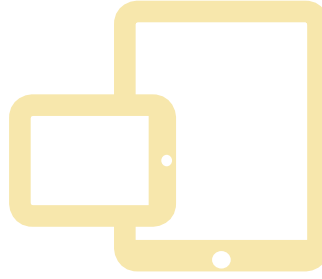


# CIRMA E-Learning Center

## Snow and Ice Management Online Training Program



Our E-Learning Programs are **FREE** to all CIRMA members.

### Course Description:

Coordinating all of the different parties involved in preparing for and dealing with a winter storm requires precision worthy of a symphony orchestra! Just as the symphony orchestra requires rehearsal to achieve precision in its performances, so do the personnel who will be responsible for keeping the streets clear and drivable during winter snow and ice storms.

This course will help winter road crews understand how different weather conditions require different types of road treatment, as well as reinforce the importance of proper calibration of equipment and finally, set out the guide lines for appropriate salt application.

**Time:** Approximately 30 minutes [Preview the Snow and Ice Management online training program here.](#)

### Learning Objectives:

- Recognize that different weather conditions require different types of road treatment.
- Comprehend the importance of proper calibration of equipment.
- Understand the guidelines for salt application.

### Key Topics Include:

- The Importance of Winter Road Maintenance
- The Importance of Proper Maintenance
- Establish a Maintenance Routine
- Inspect and Repair After Every Storm
- Plan Routes to Overlap; Keep Levels Consistent
- Schedule and Plan Routes Efficiently
- Snow Fencing
- Know Your Snow!
- Dangerous Situations
- Calibration
- As Much an "Art" as a "Science"
- Spreading Patterns
- How Much? How Often?
- The Philosophy of Anti-Icing
- Manufacturing Salt Brine
- Solid, Pre-wetted, or Liquid?

*To access CIRMA's E-Learning Center or to see a complete schedule of CIRMA's instructor-led Training & Education programs, please visit —*

[www.CIRMATraining.org](http://www.CIRMATraining.org)

To register for this course, please contact your organization's E-Learning Administrator.

